

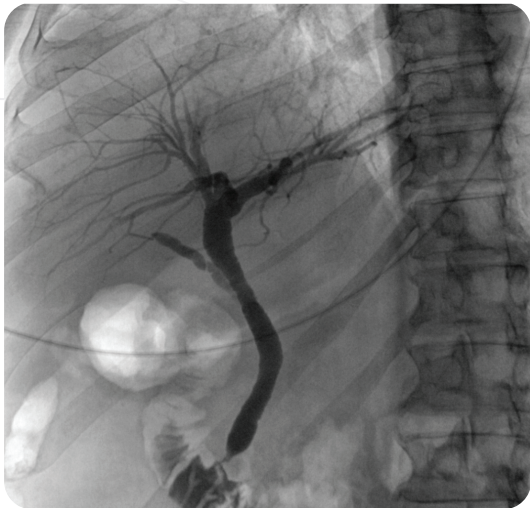
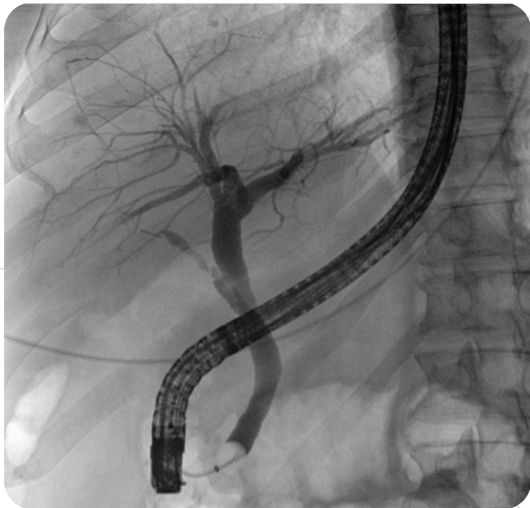
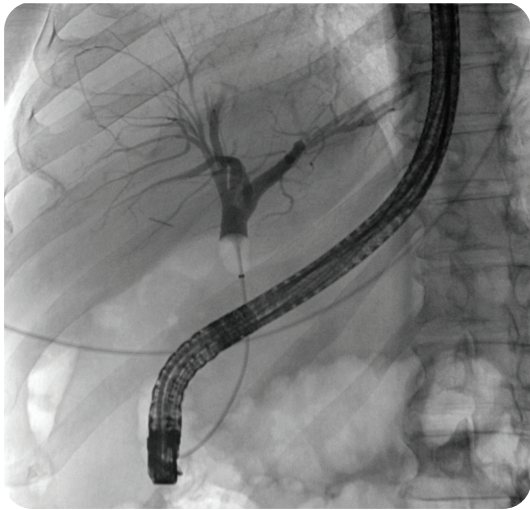


The Intelligent Choice for  
Image-guided Endoscopy

**An advanced imaging system designed to meet the unique needs of patients, gastroenterologists and staff, all in one design.**

The Intelli-C is equipped with the latest technology:

- > Exceptional image quality
- > Low radiation dose
- > Ergonomic design



## BEST-IN-CLASS GI IMAGING

- ✓ Industry-leading Cesium Iodide Flat Panel Detector ensures exceptional image quality
- ✓ Static and dynamic acquisition capabilities offer maximum imaging flexibility
- ✓ 17 x 17-inch Field of View covers more anatomy to accommodate a multitude of procedures
- ✓ Advanced image processing automatically improves image quality

## VERSATILE DESIGN FEATURES

- ✓ Left-sided table support provides for unencumbered access to the patient during procedures
- ✓ Optional removeable table-top allows the procedure space to be utilized for other endoscopic exams
- ✓ Customizable video integration, large format monitors, and equipment/anesthesia booms help optimize the user experience
- ✓ Compact design ensures the Intelli-C will fit into most existing GI suites

## OPERATIONAL ENHANCEMENTS

- ✓ Windows 10 operating system
- ✓ Carbon Fiber table, low dose software, virtual collimation and radiation-free positioning reduces operator dose
- ✓ Industry-leading wide table top and 660 pound patient weight limit offers the ability to image bariatric patients
- ✓ Longitudinal C-arm travel allows head to toe coverage without moving the patient



Distributed by Alpha Medical Equipment  
for further information please contact us at  
800-853-7487 | [sales@alphamedicalequipment.com](mailto:sales@alphamedicalequipment.com)



**Alpha Medical Equipment**